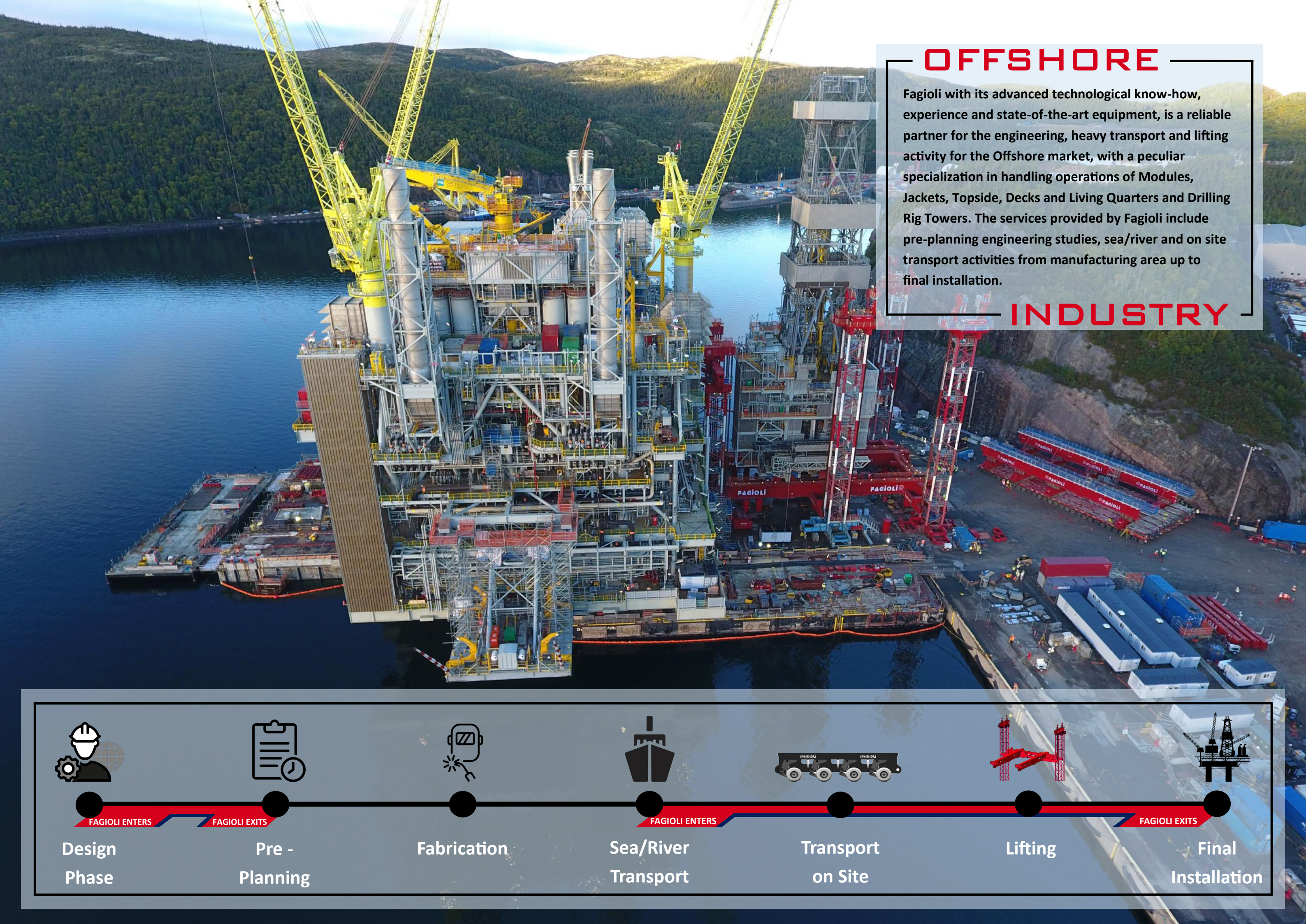




OFF-SHORE INDUSTRY

Since 1955





# OFFSHORE

Fagioli with its advanced technological know-how, experience and state-of-the-art equipment, is a reliable partner for the engineering, heavy transport and lifting activity for the Offshore market, with a peculiar specialization in handling operations of Modules, Jackets, Topside, Decks and Living Quarters and Drilling Rig Towers. The services provided by Fagioli include pre-planning engineering studies, sea/river and on site transport activities from manufacturing area up to final installation.

# INDUSTRY



Design  
Phase



Pre -  
Planning



Fabrication



Sea/River  
Transport



Transport  
on Site



Lifting



Final  
Installation

FAGIOLI ENTERS

FAGIOLI EXITS

FAGIOLI ENTERS

FAGIOLI EXITS



# OFF-SHORE

Fagioli is able, for the offshore market, to supply services involving transport - lifting - skidding equipment to lift and move the heaviest loads within fabrication shops or integration yards and at offshore locations performing handling operations of Modules and other Offshore structures such as Jackets, Topside and Semi-submersible fabrications, Decks and Living Quarters, Drilling Rig Towers.



## TURN-KEY PROJECTS

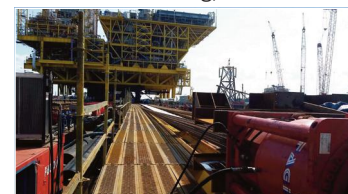
Door-to-door off-shore services with transport and load out of offshore structures from manufacturing area, chartering of dedicated H/L ships, load in, lifting, skidding and final installation with dedicated state-of-the-art equipment. Fagioli expertise extends to Ballasting, Barging and Towing operations including the supply of owned / chartered dedicated marine equipment for the sea transport activities.



## LIMITLESS TONNAGE CAPACITY



- Roll-up of complete framing panels;
- Load out and load in of complete jackets;
- Lifting of pile guide clusters.
- Lifting and transport of integrated decks, module support frames, complete decks and modules;
- Lifting and transport of semi-sub decks;
- Installation of hull structures under semi-sub decks;
- Load-out of complete semi-sub;
- Installation and change-out of thrusters.
- Transport, load-in and load-out of complete Pre - Assembled Units and Racks;
- Transport of modules from manufacturing area up to installation area with final jacking down operation (by means of SPMTs) or lifting activity
- Transport of Platform sections;
- Platform Installation;
- Module lifting;
- Module skidding;
- Caisson, J-tube and riser lifting;
- Jacket levelling;
- Lifting of telescopic flare booms;
- Connection and disconnection of yokes for FPSOs.
- De-commissioning, Demolition and Salvage;
- Barge based lifting systems



## OFF-SHORE OPERATIONS



## EQUIPMENT

### MAIN EQUIPMENT FLEET FOR THE OFF-SHORE INDUSTRY

Fagioli owns and operates one of the biggest fleet of state-of-the-art equipment in the world, being able to meet customer needs for the hauling, hoisting and installation activity.

#### SPMTs



over  
1,300 AXLE  
LINES

#### CRAWLER CRANES



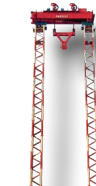
Up to 1350  
ton capacity

#### STRAND JACKS



over  
1,000 units  
(15-750 ton)

#### TOWER LIFT



over  
1,000 m

#### SKID SHOES



84  
Units (1,000  
ton capacity  
each)

#### ELEVATOR SYSTEM



10,000  
ton  
capacity

#### BARGES



10 Units  
sea and river  
activity

#### GANTRY CRANES



15 Units up  
to 800 ton  
capacity

Available other equipment such as:  
- Climbing Jacks - Screw Jacks - Jack up System - Auxiliary equipment



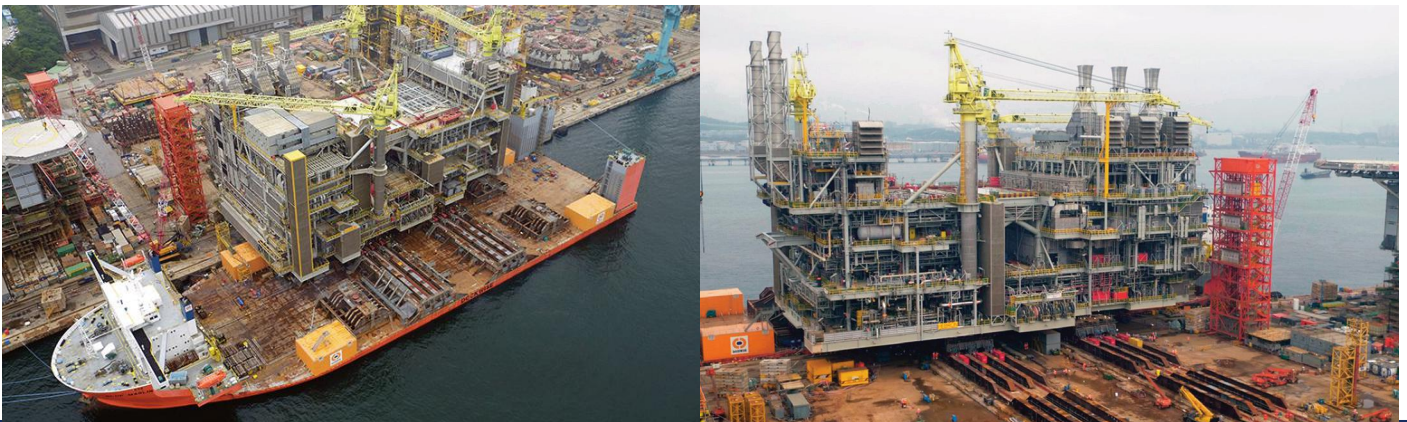
## CASE STUDY

### MEGA MOVES OF MODULES IN CANADA WEIGHING UP TO 44,000 TON

The project activity started out at the end of 2012 with an engineering phase, while operations started for Fagioli in 2014 and ended in January 2017. Fagioli were involved in the weighing, transport, load out / load in skidding and final installation of the following modules: UPM weighing about 44,000 ton / DSM weighing 3,900 ton / DES weighing 2,300 ton / Living Quarter weighing 4,500 ton / Flare Boom weighing 390 ton / Ancillary Modules . All modules were manufactured in Korea, in several fabrication yards in Canada and in USA.

#### MAIN EQUIPMENT USED BY FAGIOLI

No. 1 Elevator System ( no.6 Towers) / No. 1 Tower System (Jacking up) / No.64 1000t Capacity Skid Shoes / No.12 1200t Capacity Skid Shoes / No.230 SMPT Axles Lines / No. 8 Load Cell/Hydr. Jacks 600t Weighing System / No. 12 Climbing Jacks 600t / No. 4 Climbing Jacks 300t / No.1 Crawler Crane 1350t (LR11350) / No.5 Cranes capacity up to 400t / No.1 400 ft Barge.



Top: Load out operation of a 44,000 ton section in Korea by means of 64 skid shoes (1000 t capacity each)

Bottom: Load in and transport, lifting skidding and final installation of modules for the intersection operation

